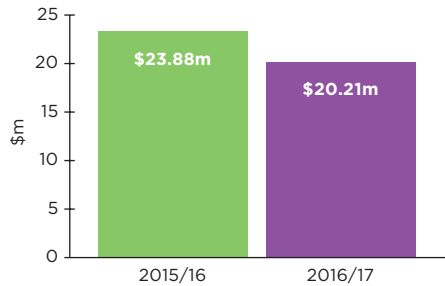


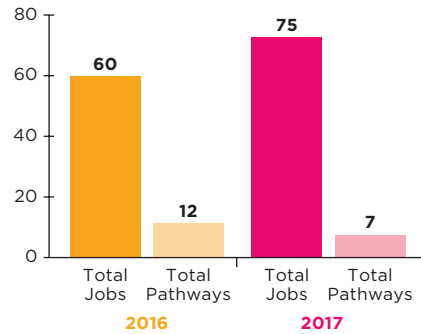
# GROW Achievements

GROW Compact Signatories have collectively achieved a \$20.21 million shift in local spend, and created 82 jobs and employment pathways for people from target communities. GROW Signatories are continuing to identify and develop innovative opportunities for local/social procurement and explore new strategies to address local disadvantage from their individual business perspectives.

## Local Spend Shift:



## Jobs & Employment Pathways:



## GROW report card 2018

**Compact Signatory Local Spend Shift 2016/17**

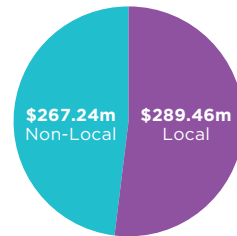
**\$20.21m**

**Jobs potentially created in 2016/17 within the region**

**178.8**

*Based on Compact Signatory local spend shift and REMPLAN economic modelling*

## Compact Signatory Spend Breakdown 2016/17:



**Make a difference today and start GROWing opportunities in our region**

Liz Everist,  
GROW Engagement Officer:

- @ liz@givewhereyoulive.com.au
- 03 5229 4364
- grow.g21.com.au



GROW is a joint initiative of Give Where You Live Foundation and G21 - Geelong Region Alliance.



Give Where You Live Foundation acknowledges key GROW funding partner Victorian State Government.

FL\_#13233

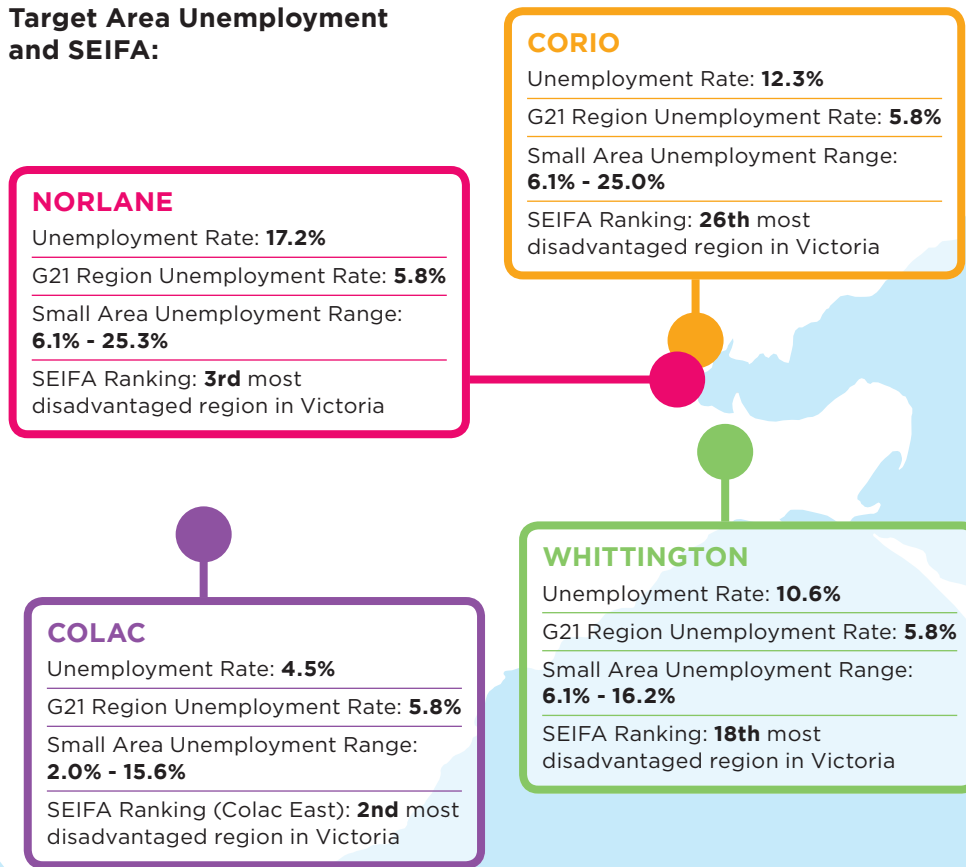
grow.g21.com.au

## GROW Target Communities

While the G21 region prospers overall, in some pockets of our region unemployment rates remain high, reaching up to 25%. Recent SEIFA data shows the four GROW target communities are still in the lowest 10% in the State. In the ranking of most disadvantaged in Victoria, Norlane and Colac East are ranked as number 2 and 3 respectively.

GROW is a bold and ambitious ten year collective impact strategy that aims to tackle place based entrenched disadvantage by reducing unemployment in target communities within the G21 region. The success of GROW is dependent on the collective engagement and commitment of business, government, not-for-profit organisations and community.

### Target Area Unemployment and SEIFA:



ABS Census Data (2016). **Unemployment Rate** is based on population age between 15 to 64 years old. **SEIFA** relates to the Socio-Economic Indexes for Australia and the Index of Relative Socio-Economic Disadvantage. **Small Area** relates to Statistical Area Level 1 - regions smaller than suburbs which are used for Census data collection.

## GROW Compact Signatories

GROW encourages job creation through local social procurement and links these jobs to disadvantaged job seekers through demand-led employment. In partnership with local business, government and community organisations, we are working to ensure our region's growth is inclusive.

GROW's growing collective of 82 Compact Signatories are working towards this common agenda, and 46 have made commitments through their Compact Action Plans (21 plans are now published online). Compact Signatories are also providing data on their spend and employment so we can track GROW's progress.

